



**Noise Monitoring Result**

**Day Time (0700 - 1900hrs on normal weekdays)**

Location: M1a - Harbour Road Sports Centre

Date	Time	Weather	Measurement Noise Level			Baseline Level	Construction Noise Level	Limit Level
			Leq	L10	L90	Leq	Leq	Leq
Unit: dB(A), (30-min)								
2/12/2013	11:30	Fine	71.6	74.5	65.0	72	72	75
10/12/2013	14:00	Fine	71.9	74.5	67.0	72	72	75
19/12/2013	10:45	Fine	72.5	75.0	67.0	72	61	75
23/12/2013	9:23	Fine	73.1	76.0	68.0	72	66	75

Location: M2b - Noon-day gun area

Date	Time	Weather	Measurement Noise Level			Baseline Level	Construction Noise Level	Limit Level
			Leq	L10	L90	Leq	Leq	Leq
Unit: dB(A), (30-min)								
4/12/2013	9:32	Fine	70.0	72.0	67.0	68	66	75
10/12/2013	16:40	Fine	69.7	71.5	66.5	68	66	75
18/12/2013	8:40	Fine	67.9	71.3	61.4	68	56	75
23/12/2013	10:07	Fine	74.2	76.5	69.0	68	73	75

Location: M3a - Tung Lo Wan Fire Station

Date	Time	Weather	Measurement Noise Level			Baseline Level	Construction Noise Level	Limit Level
			Leq	L10	L90	Leq	Leq	Leq
Unit: dB(A), (30-min)								
4/12/2013	10:16	Fine	66.4	67.5	64.0	69	66	75
10/12/2013	17:45	Fine	66.5	67.5	65.0	69	67	75
18/12/2013	9:20	Fine	68.8	70.5	66.0	69	69	75
23/12/2013	10:46	Fine	67.8	69.0	65.0	69	68	75

Location: M4b - Victoria Centre

Date	Time	Weather	Measurement Noise Level			Baseline Noise Level	Construction Noise Level	Limit Level
			Leq	L10	L90	Leq	Leq	Leq
Unit: dB(A), (30min)								
4/12/2013	11:03	Fine	71.8	73.0	69.5	67	70	75
10/12/2013	8:29	Cloudy	73.9	76.0	68.0	67	73	75
18/12/2013	10:05	Fine	72.0	73.5	68.0	67	70	75
23/12/2013	11:24	Fine	70.6	72.5	67.0	67	68	75

Location: M5b - City Garden

Date	Time	Weather	Measurement Noise Level			Baseline Level	Construction Noise Level	Limit Level
			Leq	L10	L90	Leq	Leq	Leq
Unit: dB(A), (30min)								
4/12/2013	15:37	Fine	68.1	70.0	65.5	68	52	75
10/12/2013	10:36	Cloudy	68.9	70.0	66.5	68	62	75
17/12/2013	15:05	Cloudy	67.1	68.0	64.5	68	67	75
23/12/2013	13:07	Fine	69.8	71.0	68.0	68	65	75

Location: M6 - HK Baptist Church Henrietta Secondary School

Date	Time	Weather	Measurement Noise Level			Baseline Level	Construction Noise Level	Limit Level
			Leq	L10	L90	Leq	Leq	Leq
Unit: dB(A), (30-min)								
4/12/2013	16:48	Fine	73.2	74.0	71.5	71	70	70
10/12/2013	9:18	Cloudy	75.2	76.0	73.0	71	73	65
18/12/2013	10:40	Fine	74.6	76.6	73.2	71	72	65
23/12/2013	14:50	Fine	73.1	74.5	71.0	71	69	70



## Noise Monitoring Result

### Day Time (0700 - 1900hrs on normal weekdays)

Location: M7e - International Finance Centre (Eastern End of Podium) (Reference Station)

Date	Time	Weather	Measurement Noise Level			Baseline Level	Construction Noise Level	Limit Level
			Leq	L10	L90	Leq	Leq	Leq
Unit: dB(A), (30-min)								
2/12/2013	10:00	Fine	72.3	75.0	66.5	67	71	N/A
10/12/2013	14:35	Fine	69.2	71.0	66.0	67	65	N/A
19/12/2013	9:50	Fine	72.9	75.5	65.5	67	72	N/A
23/12/2013	16:00	Fine	69.8	71.5	65.5	67	67	N/A

Location: M7w - International Finance Centre (Western End of Podium)

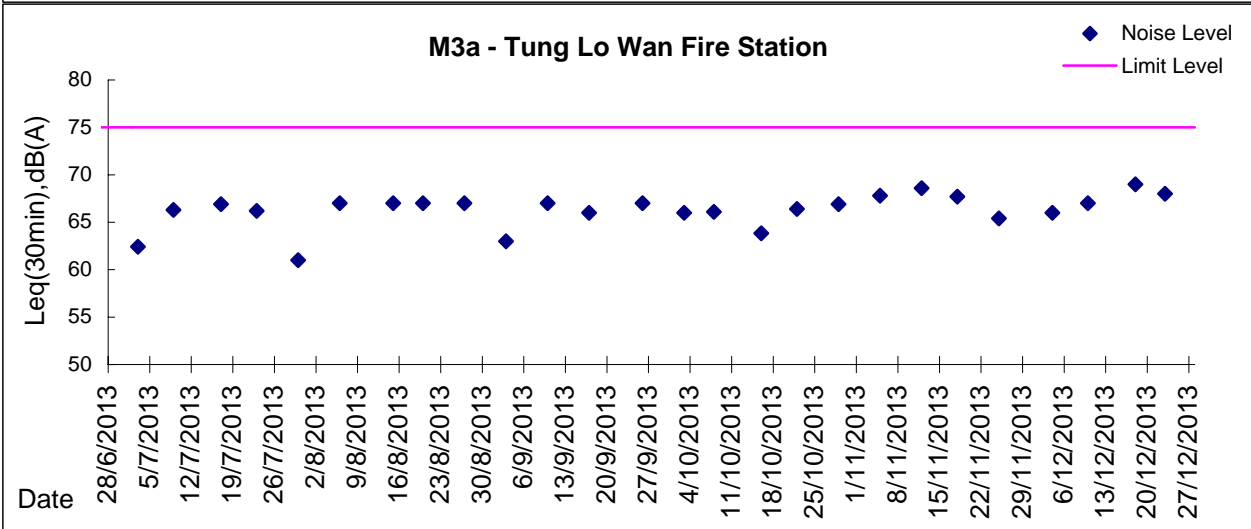
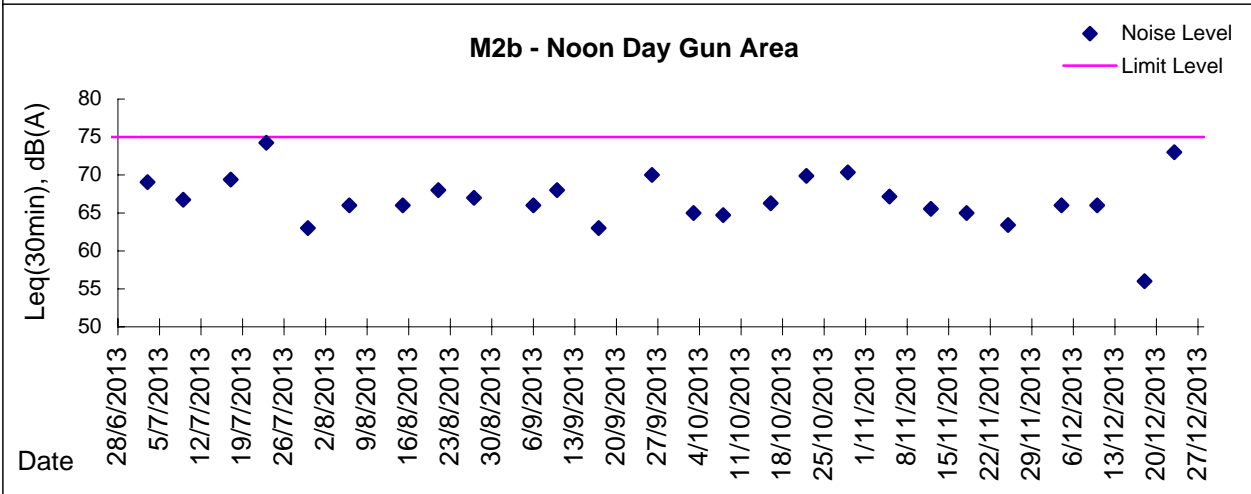
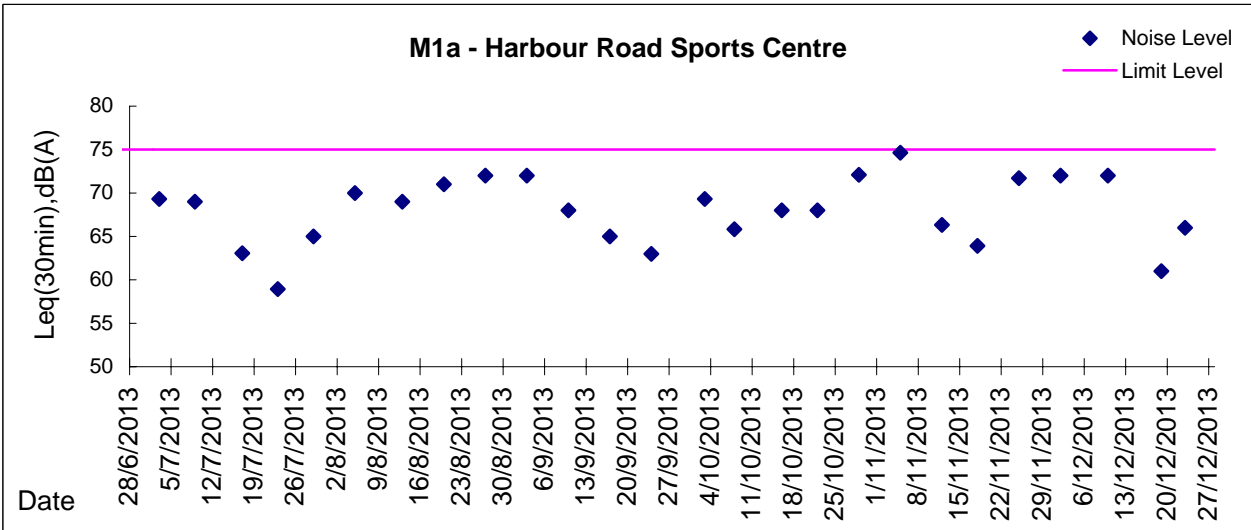
Date	Time	Weather	Measurement Noise Level			Baseline Level	Construction Noise Level	Limit Level
			Leq	L10	L90	Leq	Leq	Leq
Unit: dB(A), (30-min)								
2/12/2013	9:25	Fine	67.1	68.0	63.5	69	67	75
10/12/2013	14:00	Fine	68.0	70.5	63.0	69	68	75
19/12/2013	9:10	Fine	68.6	70.0	66.0	69	69	75
23/12/2013	16:35	Fine	66.6	68.5	63.5	69	67	75

Location: M8 - City Hall

Date	Time	Weather	Measurement Noise Level			Baseline Level	Construction Noise Level	Limit Level
			Leq	L10	L90	Leq	Leq	Leq
Unit: dB(A), (30-min)								
2/12/2013	10:50	Fine	61.4	62.5	56.0	64	61	70
10/12/2013	15:10	Fine	63.2	65.5	58.5	64	63	70
19/12/2013	8:15	Fine	61.7	64.0	58.0	64	62	70
23/12/2013	17:18	Fine	64.5	66.5	56.0	64	55	70



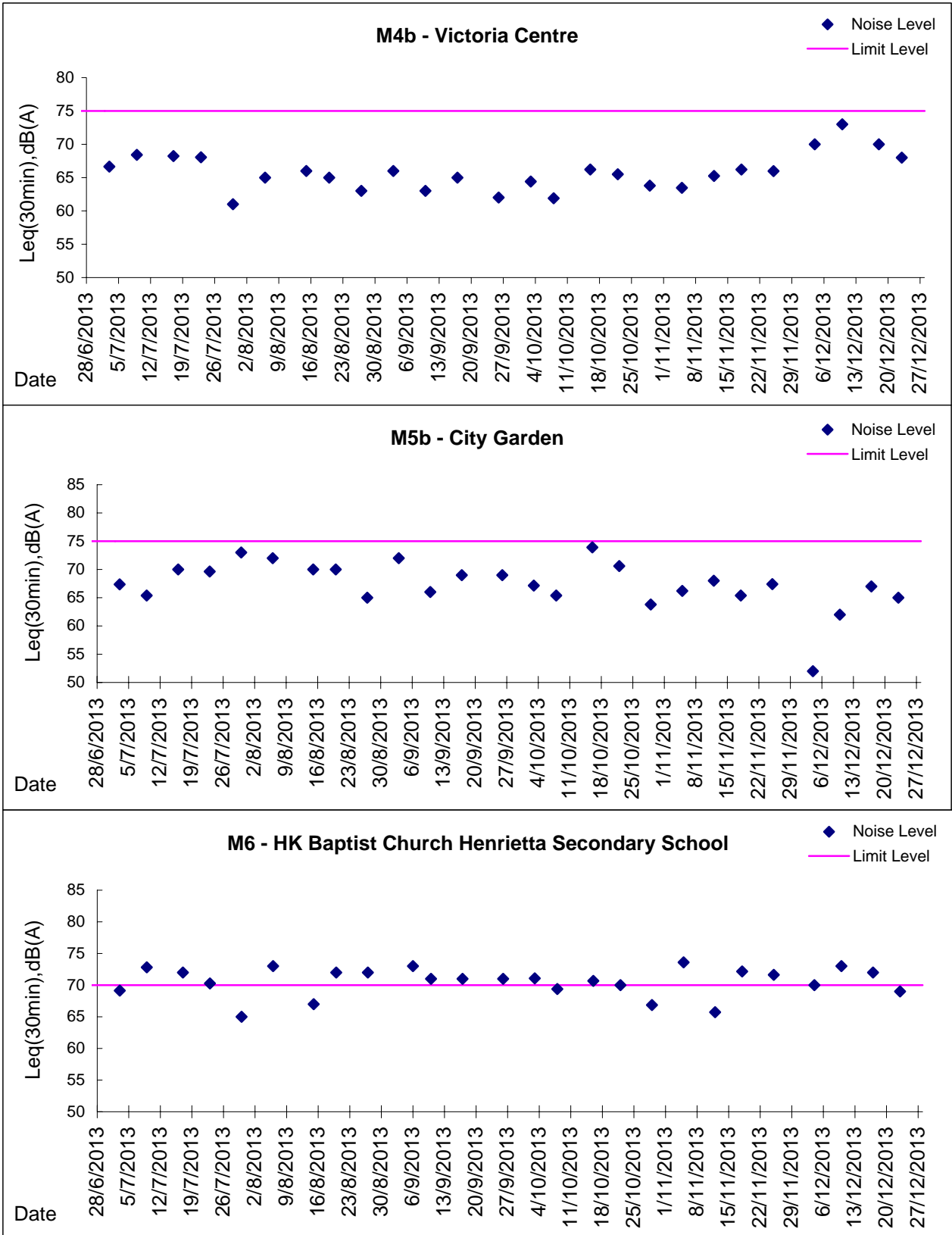
**Graphic Presentation of Noise Monitoring Result**  
**Day Time (0700 - 1900hrs on normal weekdays)**





**Graphic Presentation of Noise Monitoring Result**

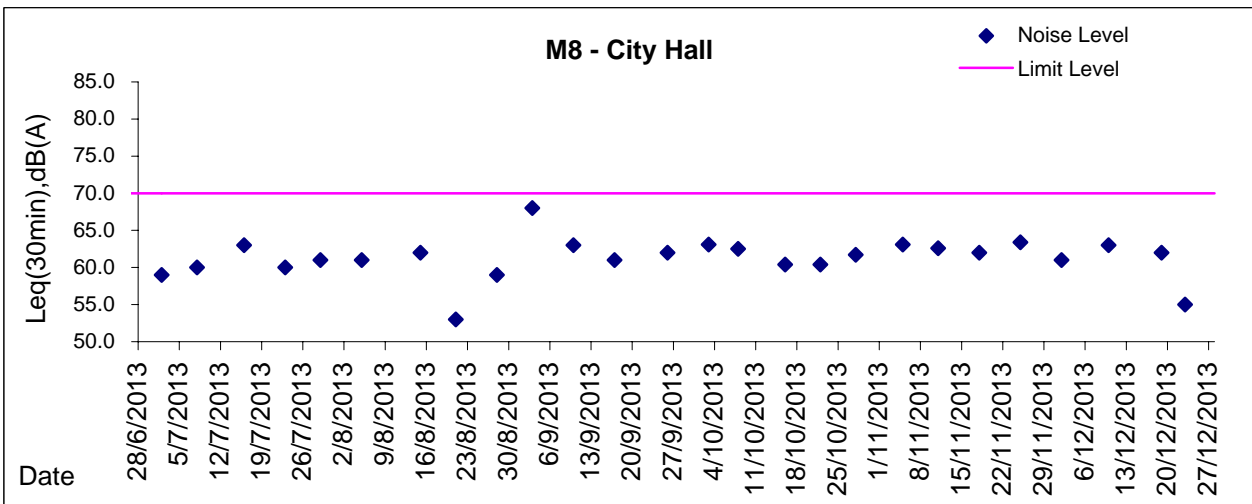
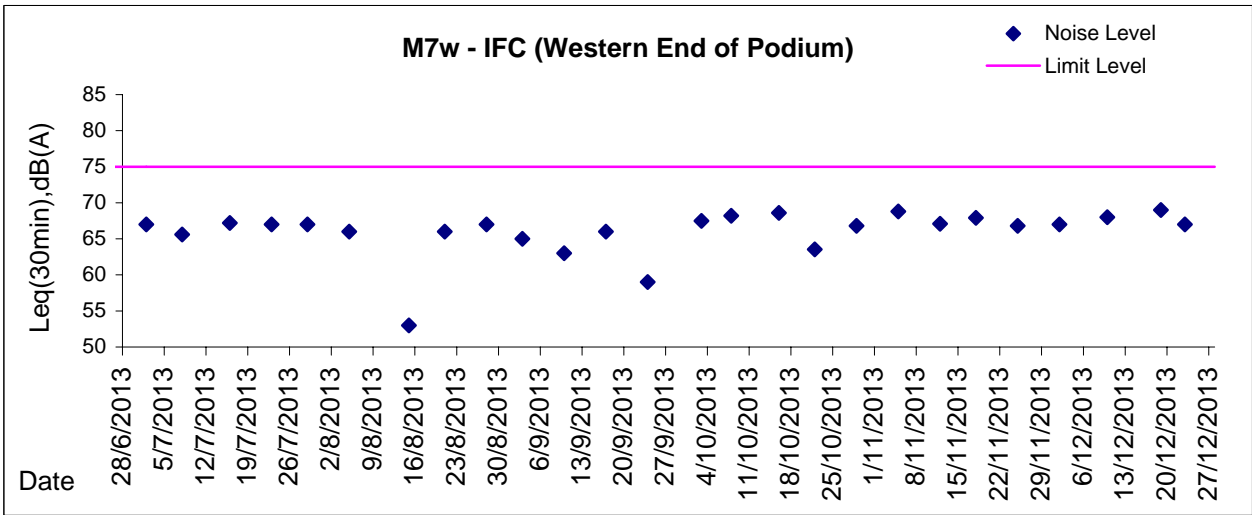
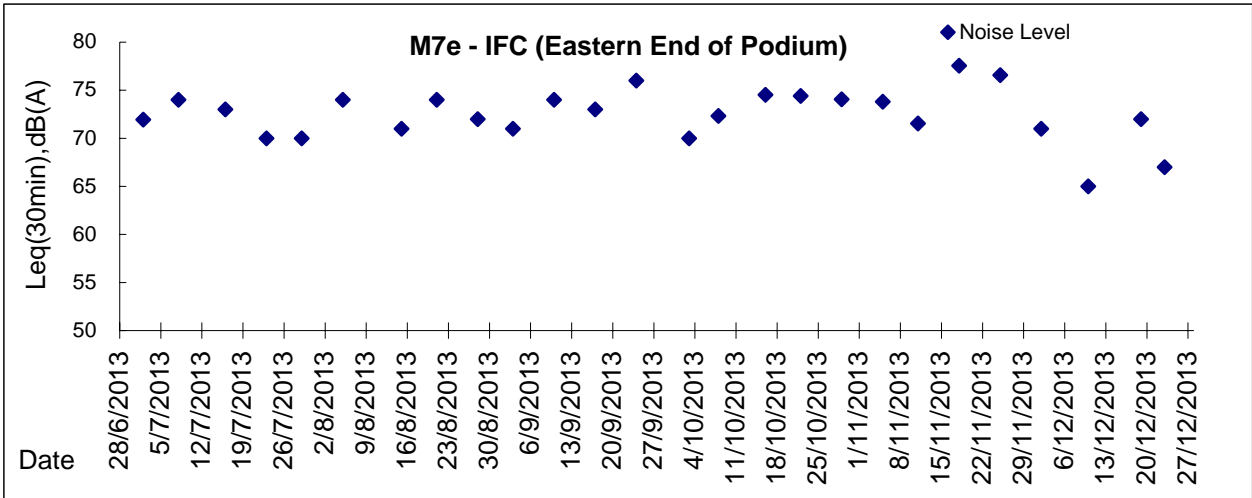
**Day Time (0700 - 1900hrs on normal weekdays)**





**Graphic Presentation of Noise Monitoring Result**

**Day Time (0700 - 1900hrs on normal weekdays)**



\* Remark: M7e - IFC (Eastern End of Podium) is a reference monitoring station